

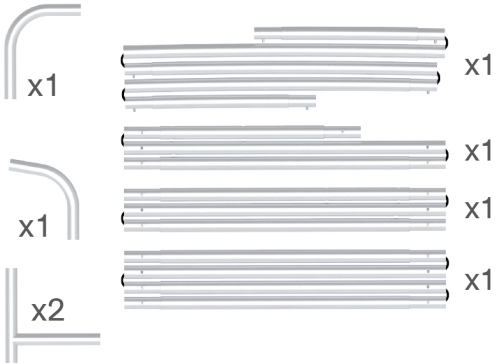
# INSTRUCTION



**10X20FT-BOOTH-13**

## STEPS

(1) Hardware

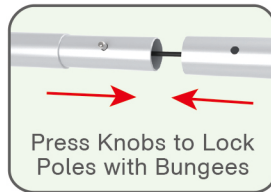


(2) Printed Graphic Fabric Banner (Optional)



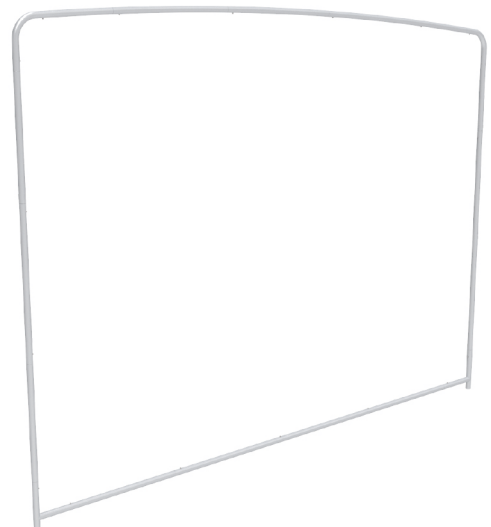
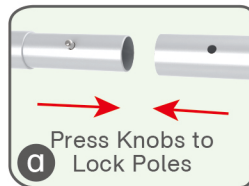
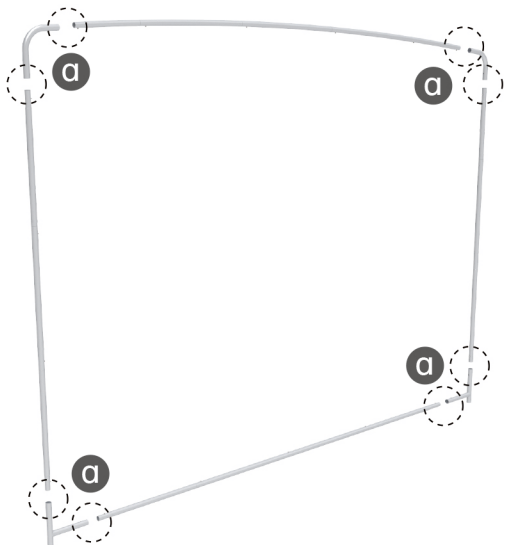
### STEP 01

Connect to make long poles according to labelings.



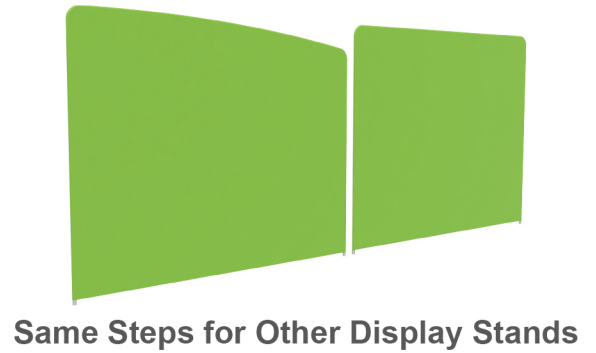
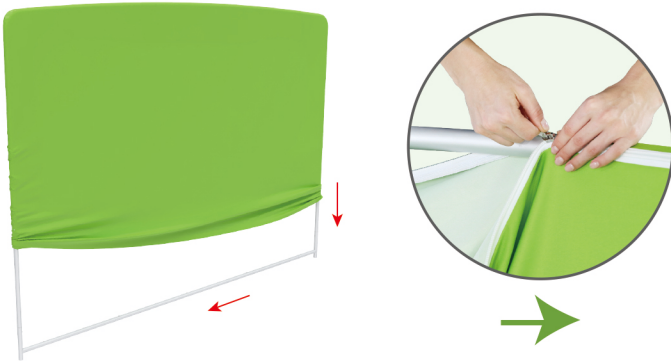
### STEP 02

Connect long poles with corner poles according to labelings, connect support pole onto frame.

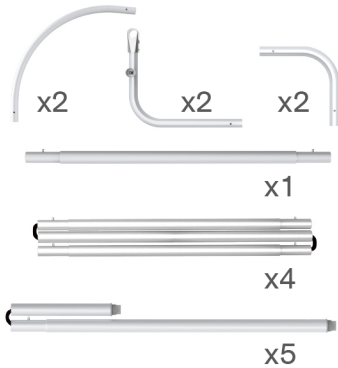


## STEPS

**STEP 03** Slide fabric banner on frame from top and zip up at bottom.



(1) Hardware



(2) Printed Graphic Fabric Banner (Optional)

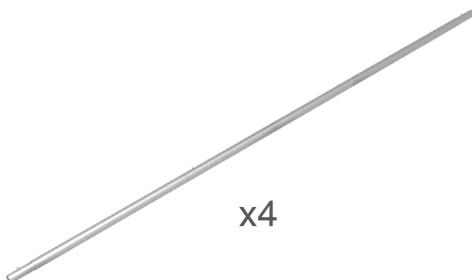
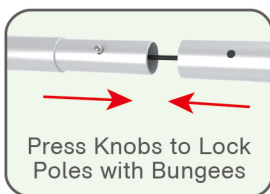


### STEP 01

Connect to make long poles according to labelings.

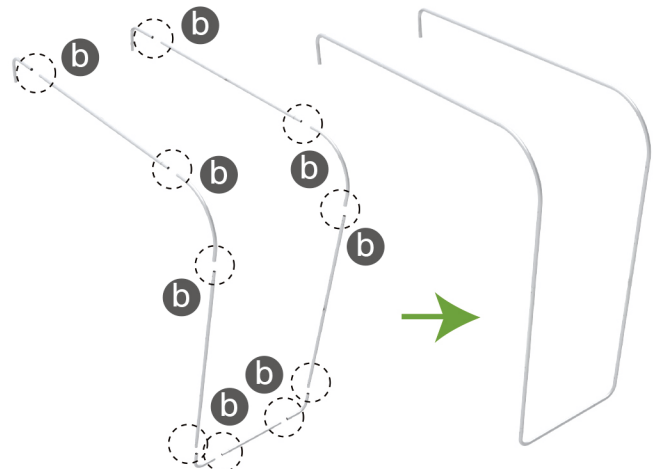
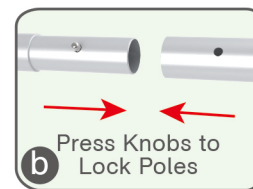


x4



### STEP 02

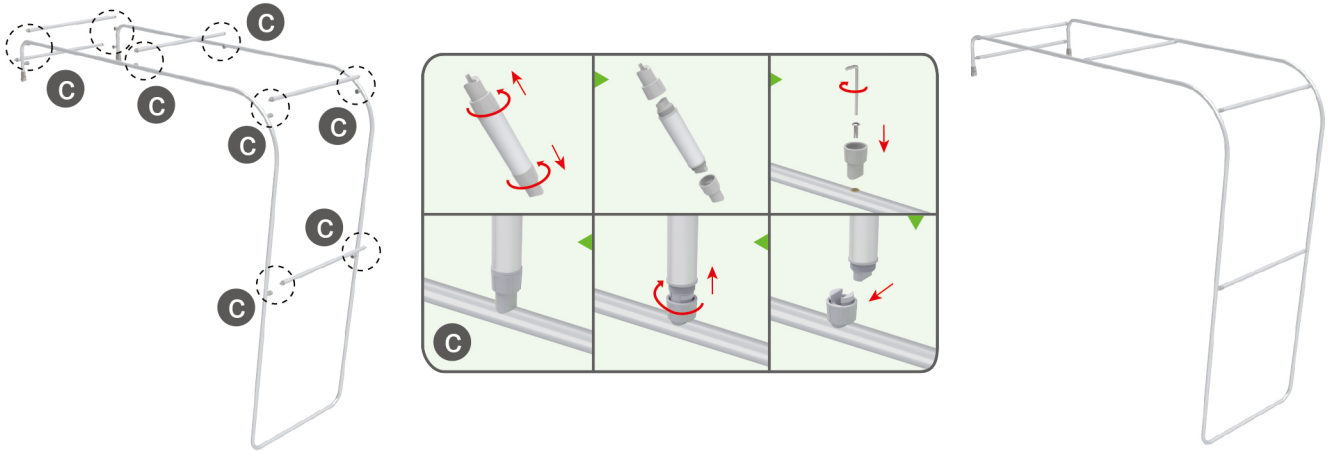
Connect long poles with corner poles according to labelings, connect support pole onto frame.



## STEPS

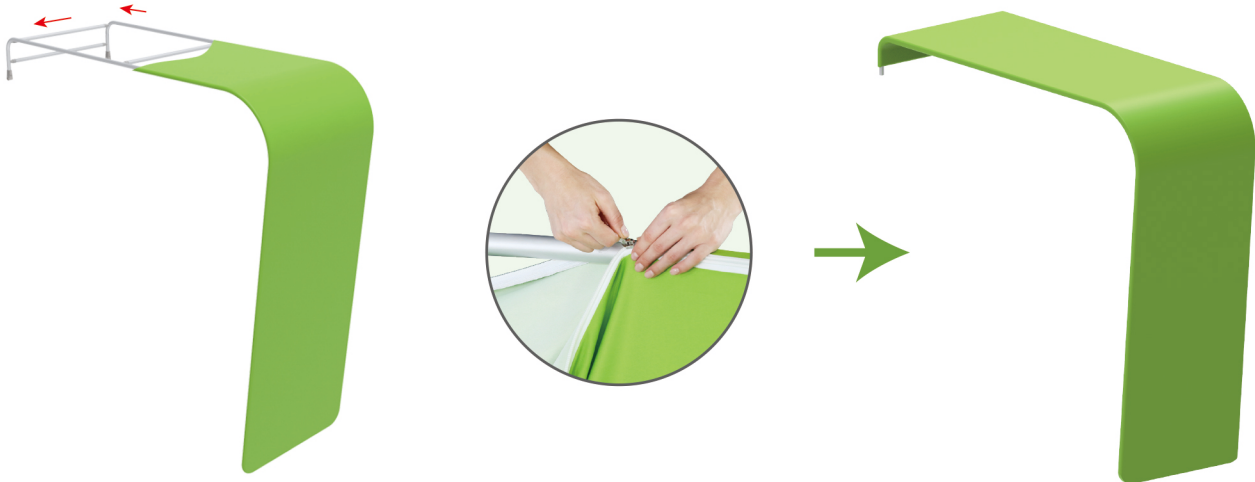
### STEP 03

Connect support poles onto frame.

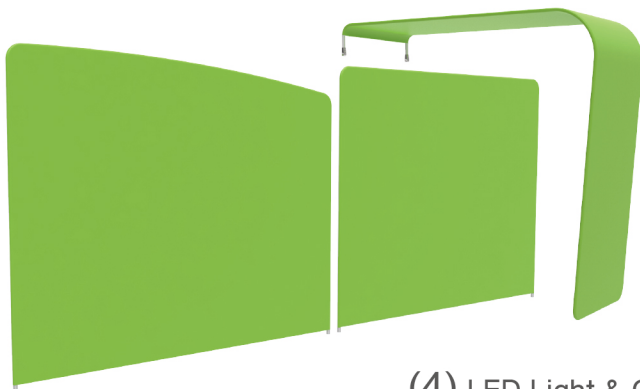


### STEP 04

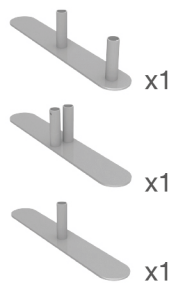
Slide fabric banner on frame from bottom and zip up at top.



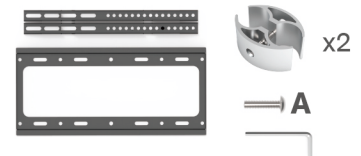
## Booth Set Assembly



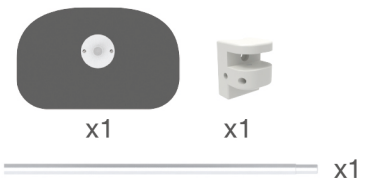
(1) Base



(2) C-Shaped Clip & TV Mount



(3) MDF Board Table



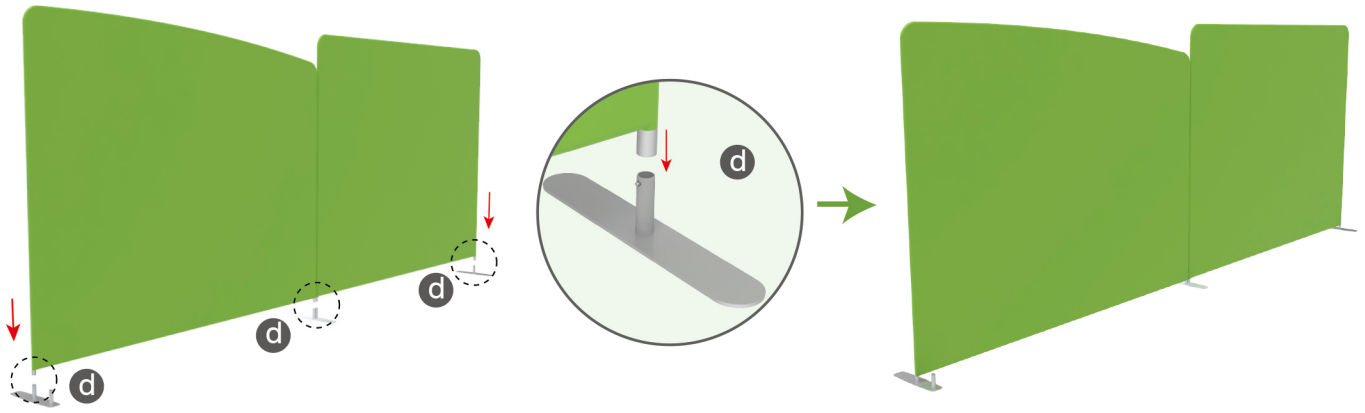
(4) LED Light & Clip



## STEPS

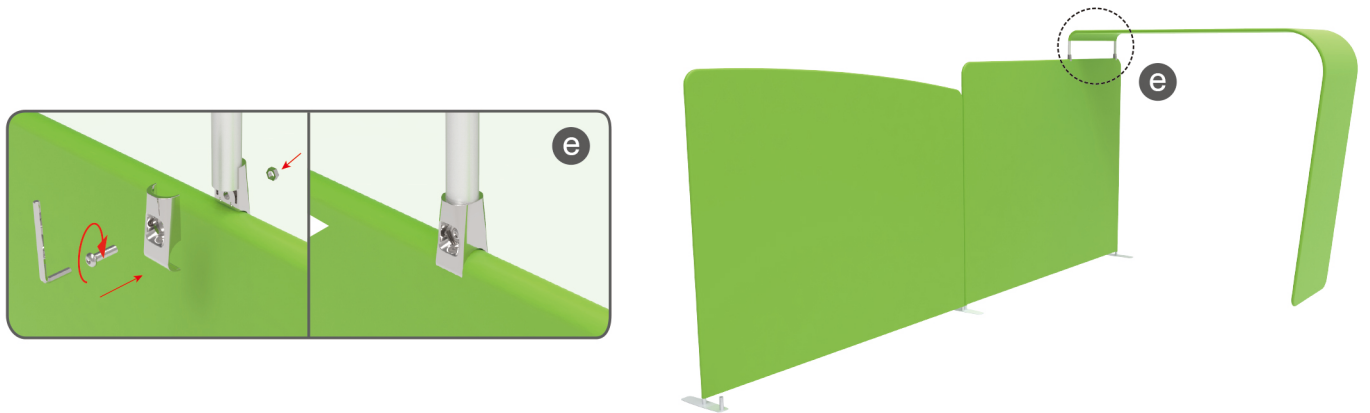
### STEP 01

Insert display stands onto feet by pressing their knobs.



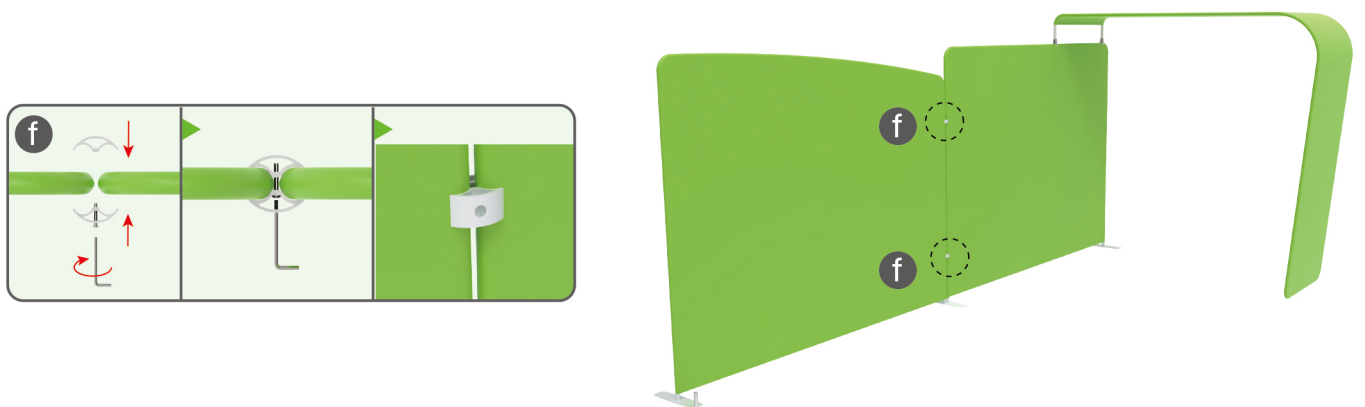
### STEP 02

Connect display stands with arm clips.



### STEP 03

Interconnect display stands with C-shaped clips.



## STEPS

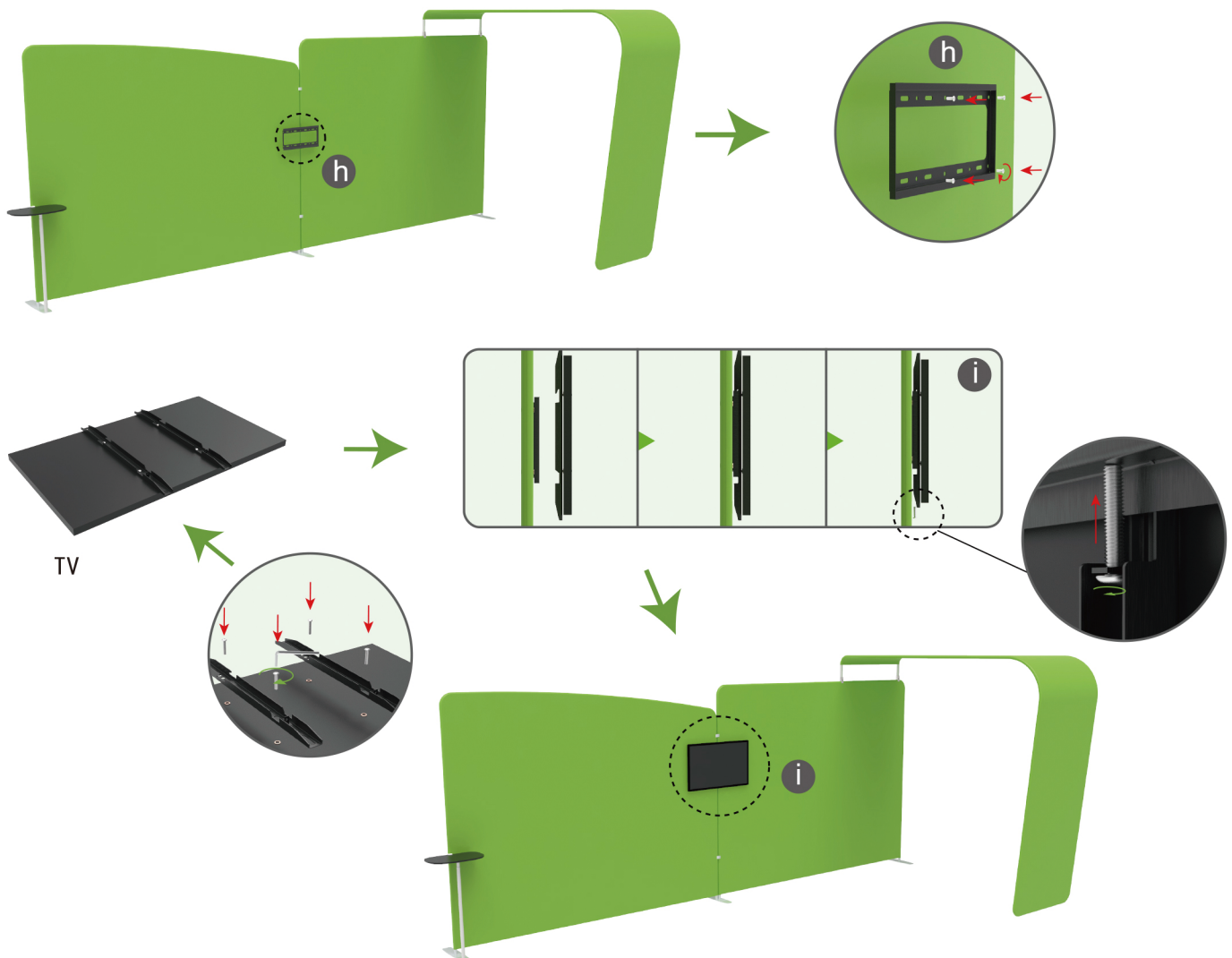
### STEP 04

Insert pole into base, screw clamp with hex wrench, place MDF board onto pole & insert into clamp with screw.



### STEP 05

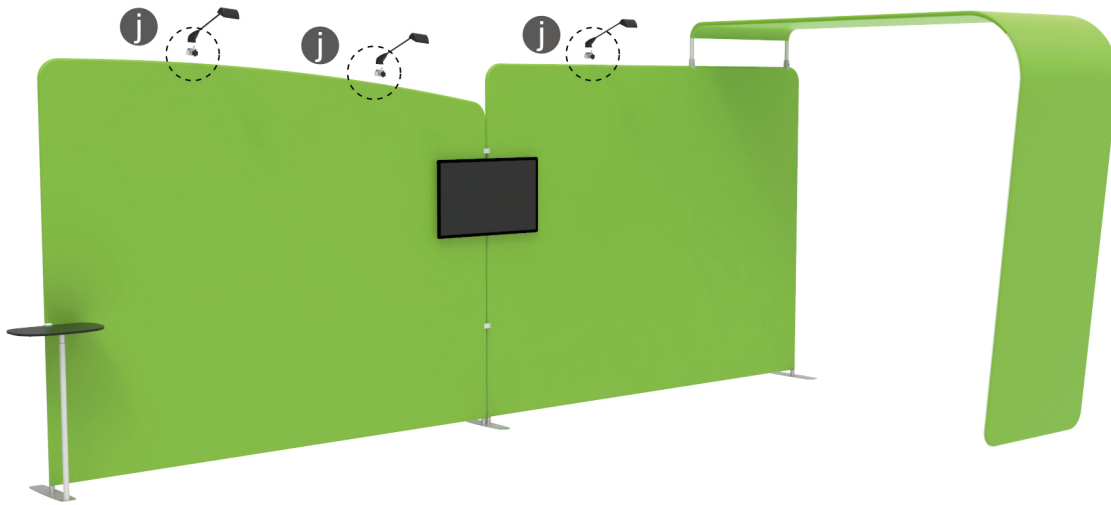
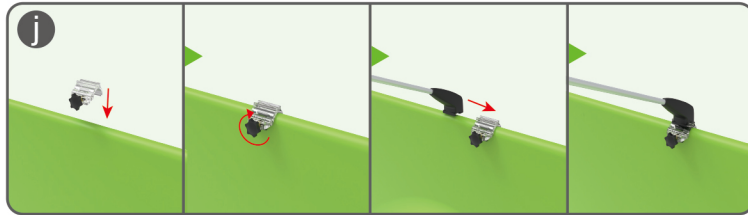
Screw TV mount with hex wrench.



## STEPS

### STEP 06

Screw light clips at top of display stands, slide lights onto them and adjust their direction.



10X20FT-BOOTH-13

## STEPS

(1) Durable Plastic Hard Case, Aluminum Support Poles

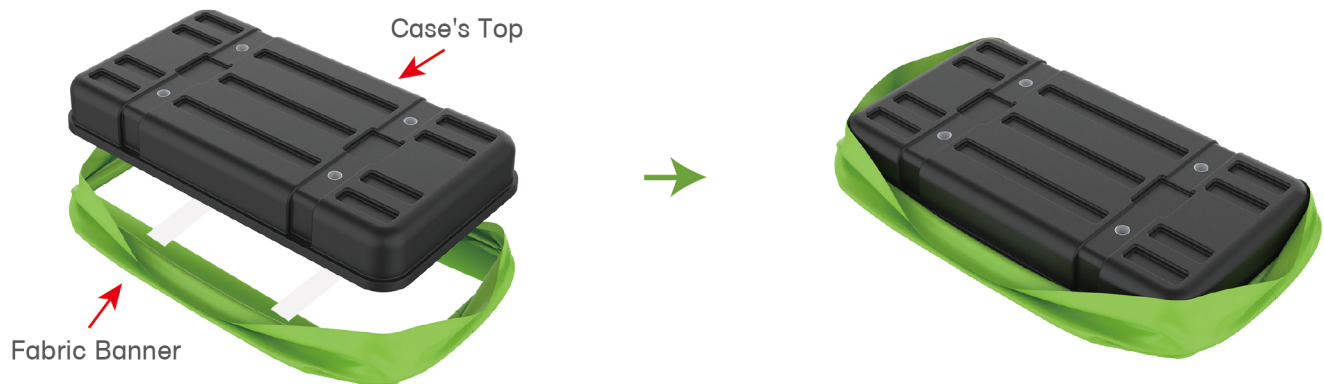


(2) Printed Graphic Fabric Banner



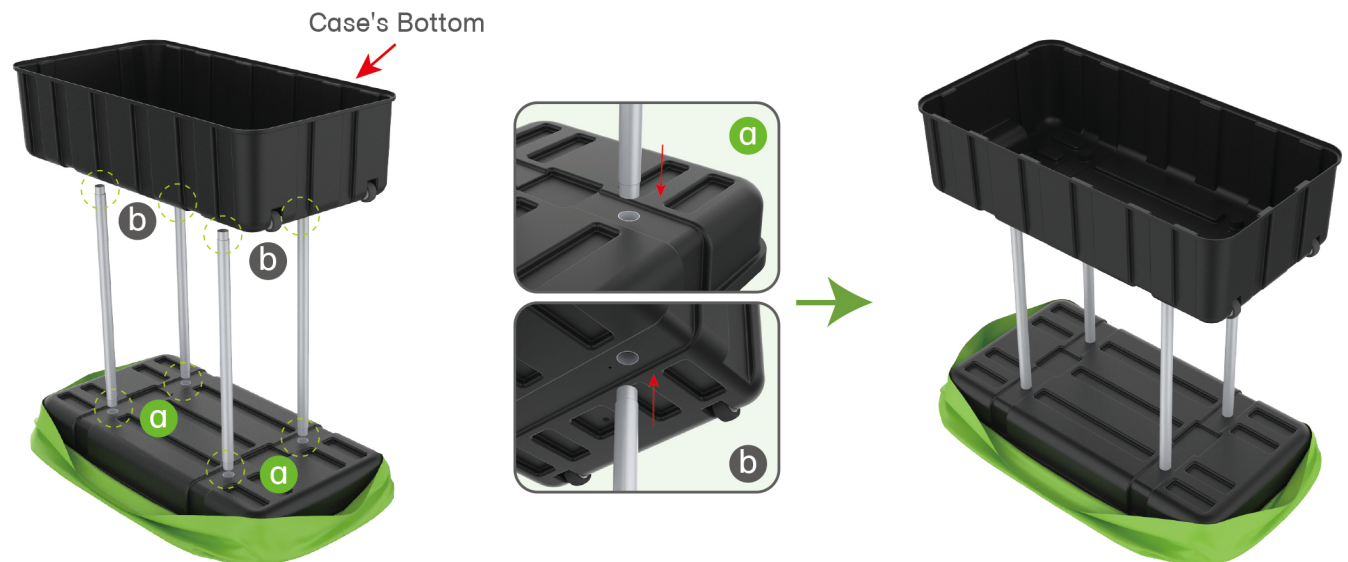
### STEP 01

Put hard case's top into fabric banner.



### STEP 02

Insert support poles into hard case's top & bottom.

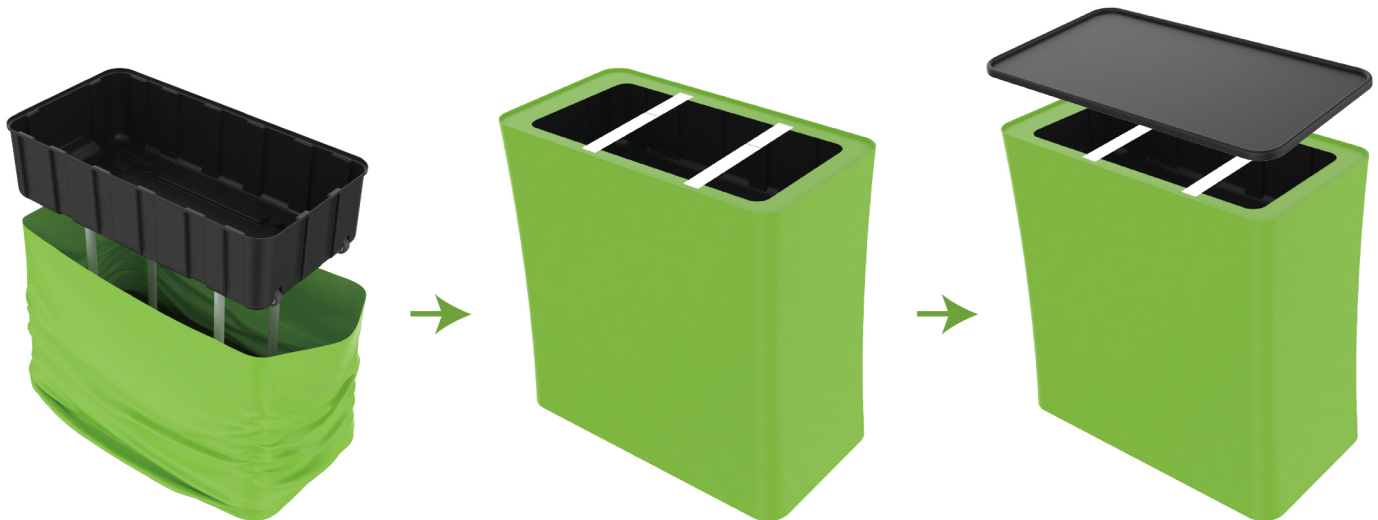




### STEPS

#### STEP 04

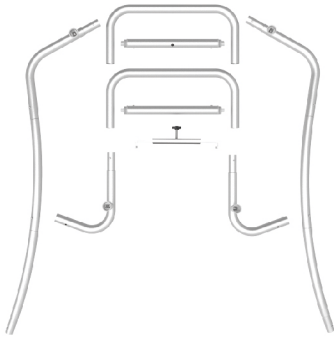
Wrap fabric banner from bottom to top & twist it to be smooth, lay hard case's intermediate panel on podium's top.



★ One Tool (Hex Wrench) 

## STEPS

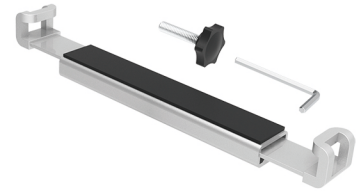
(1) Snap Tubes



(2) Printed fabric banner

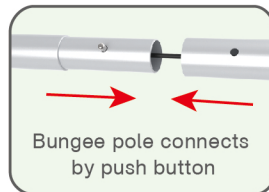


(3) Tablet PC holder



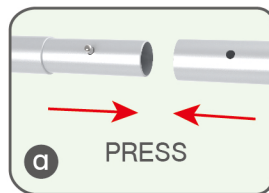
### STEP 01

To Connect the tubes according to the labellings



### STEP 02

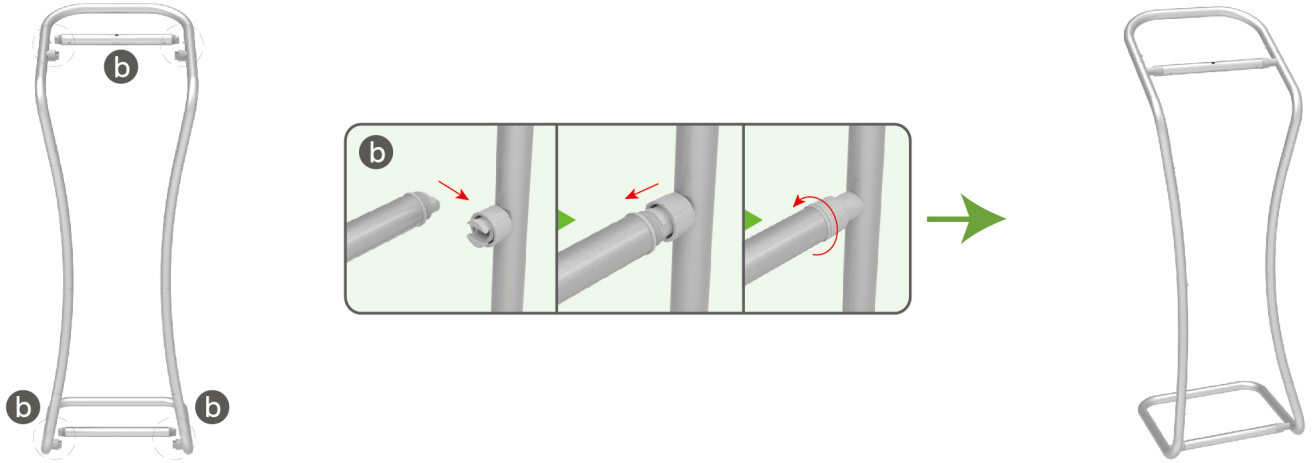
To connect 2 long side tubes by the corner pieces



## STEPS

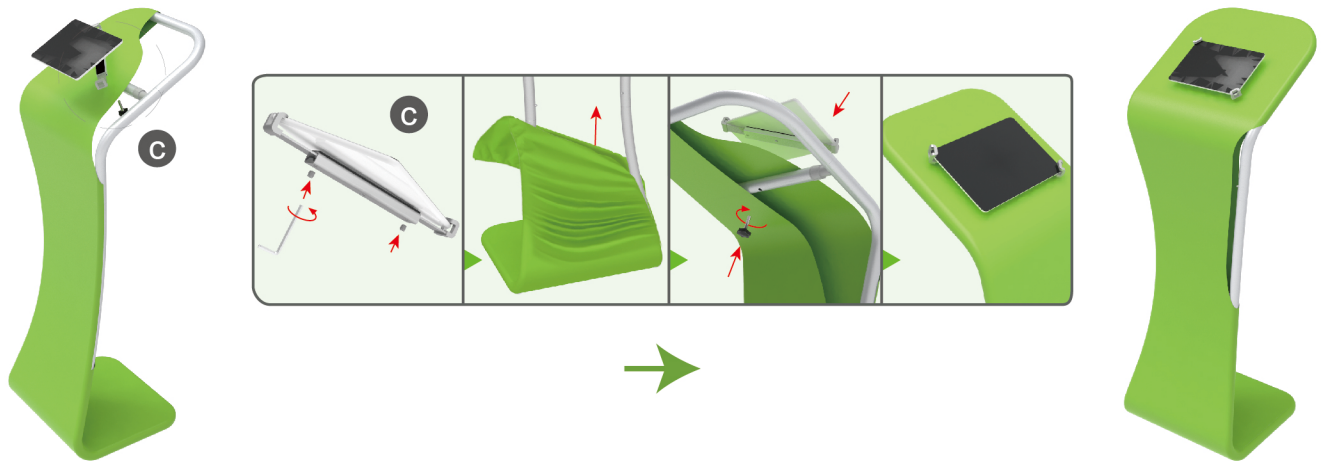
### STEP 03

To install the cross bar according to labellings



### STEP 04

To wrap the fabric cover from top to bottom and zip to the middle of frame, then put the iPad in the holder and adjust the holder to right size and lock it by Allen Key Afterwards, install the set to the display stand.



### STEP 05

Zip up completely

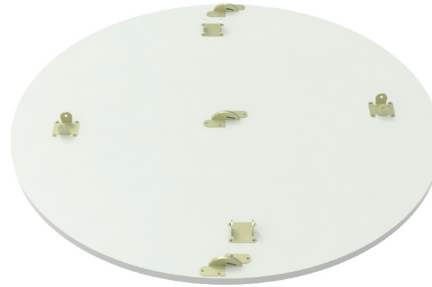


## STEPS

### (1) Hardware



### (2) Countertop Panel



### (3) Fixing Accessory

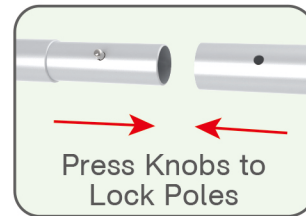


### (4) Printed Graphic Fabric Banner



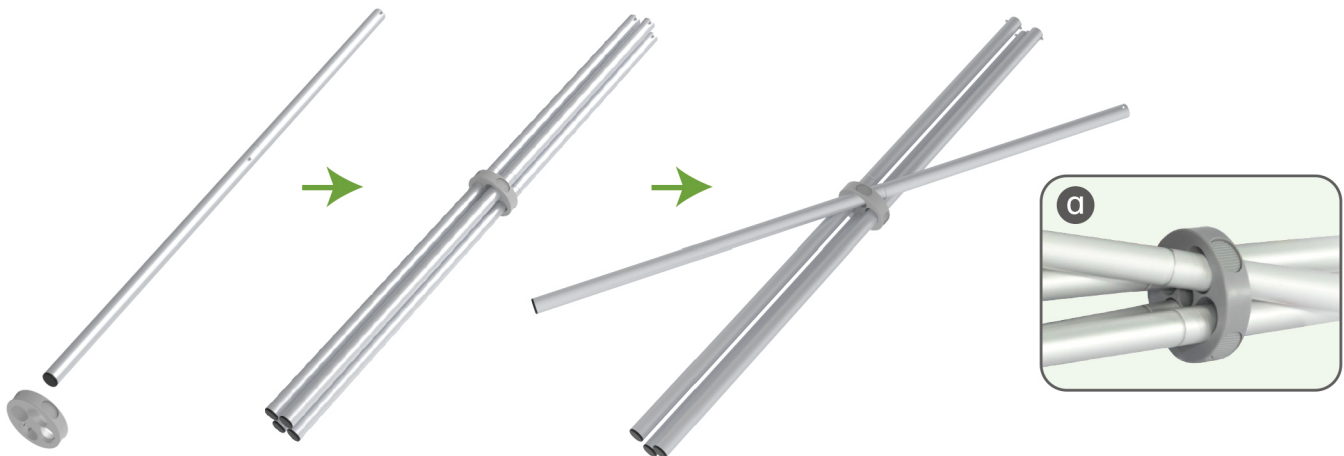
#### STEP 01

Connect to make long poles according to labelings.



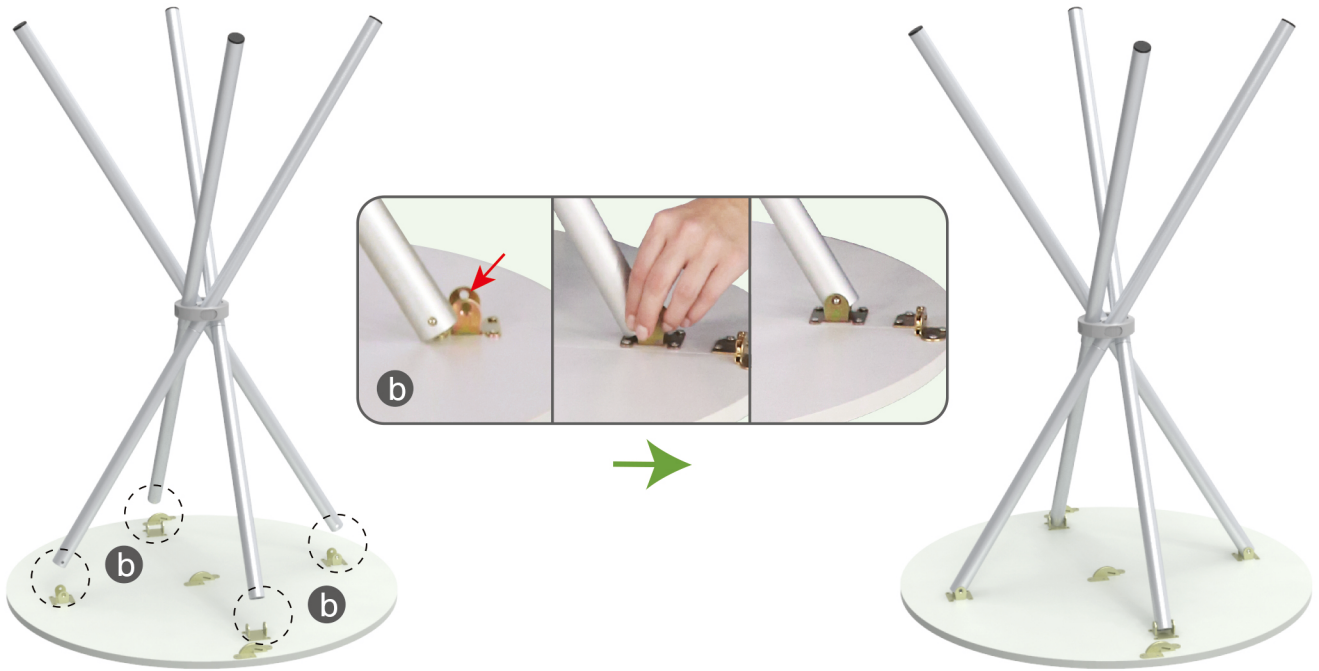
#### STEP 02

Insert poles into fixing accessory until you hear a 'Ding' sound to make poles' knobs clip into it & its concave parts pop out.



## STEPS

**STEP 03** Press poles' knobs to clip into countertop's slot.



**STEP 04**

Wrap fabric banner from top to bottom, put poles into pockets & zip up.

